

# Air Traffic Survey 2015



**Statistics Office**  
HM Government of Gibraltar





Statistics Office

---

HM Government of Gibraltar

# AIR TRAFFIC SURVEY 2015



**Statistics Office**  
HM Government of Gibraltar

Statistics Online

Copies of the Air Traffic Survey can be obtained, free of charge from the Statistics Office and are also available for download from the Gibraltar Government Website (<http://www.gibraltar.gov.gi/new/downloads>).

Historical data can be downloaded from previous copies of the report available on-line.

Comments and requests for general information should be addressed to:

Statistics Office  
99 Harbours Walk  
The New Harbours  
Or

E-mail: [statistics@gibraltar.gov.gi](mailto:statistics@gibraltar.gov.gi)

Tel: +350 20075515 / +350 20075490 / +350 20052541

Fax: +350 20051160

## PREFACE

The Statistics (Air Traffic Survey) Order 1971 requires that the Government Statistician prepare a report and summary of the findings of the Air Traffic Survey to be laid before the Gibraltar Parliament.

This report contains statistical data on air traffic operations between Gibraltar and other destinations for both scheduled and charter airlines for the years 1991 to 2015. It also includes some general data on commercial freight and on the number of flights arriving in Gibraltar.

I must express my thanks to the Gibraltar Air Terminal Ltd and Borders and Coastguard Agency for their continued co-operation in the conduct of this Survey.

GOVERNMENT STATISTICIAN



**DEFINITIONS AND NOTES**

- (a) Passenger Load Factor:  $\frac{\text{All seats used}}{\text{All seats offered (less in-transits)}} \times 100$
- (b) Revenue Load Factor:  $\frac{\text{All seats used by "paying" passengers}}{\text{All seats offered (less in-transits)}} \times 100$
- (c) Scheduled Flights: are regular flights planned according to a published timetable, including those supplementary thereto, and available for use by members of the public.
- (d) Charter Flights: includes flights carrying 10 or more passengers, other than scheduled services and Ministry of Defence Charters. Charter flights as from 1998 include all destinations, and no Charter operations were recorded during 1993-1997, 2008, 2011 - 2013.
- (e) In interpreting the figures it should be noted that:
- (i) Flights to and from Manchester re-commenced in September 2008.
  - (ii) Flights to and from Heathrow re-commenced in October 2009.
  - (iii) Flights to and from Gatwick were reduced from 13 to 7 a week as from October 2009.
  - (iv) Flights to and from Madrid re-commenced in April 2009 and ended in March 2010.
  - (v) Flights to and from Liverpool commenced in March 2011 and ended in October 2012.
  - (vi) Flights to and from East Midlands commenced in March 2012 and ended in September 2012.
  - (vii) Flights to and from Birmingham commenced in March 2013.
  - (viii) Flights to and from Marrakech commenced in April 2014 and ended in July 2014.
  - (ix) Flights to and from Tangier commenced in March 2015.
  - (x) Flights to and from Bristol commenced in April 2015.
  - (xi) Passenger load factors are calculated on the basis of actual figures and exclude passengers on connecting flights when applicable.
  - (xii) Revenue load factors are calculated in the same way as passenger load factors except they exclude non-paying passengers.
  - (xiii) Non-scheduled flights include commercial charters, business jets and light aircraft.
  - (xiv) Commercial freight includes from/to all destinations.
  - (xv) The yearly totals have been rounded off from the actual figure and need not necessarily equal the sum of the rounded off sub-totals.





# Contents

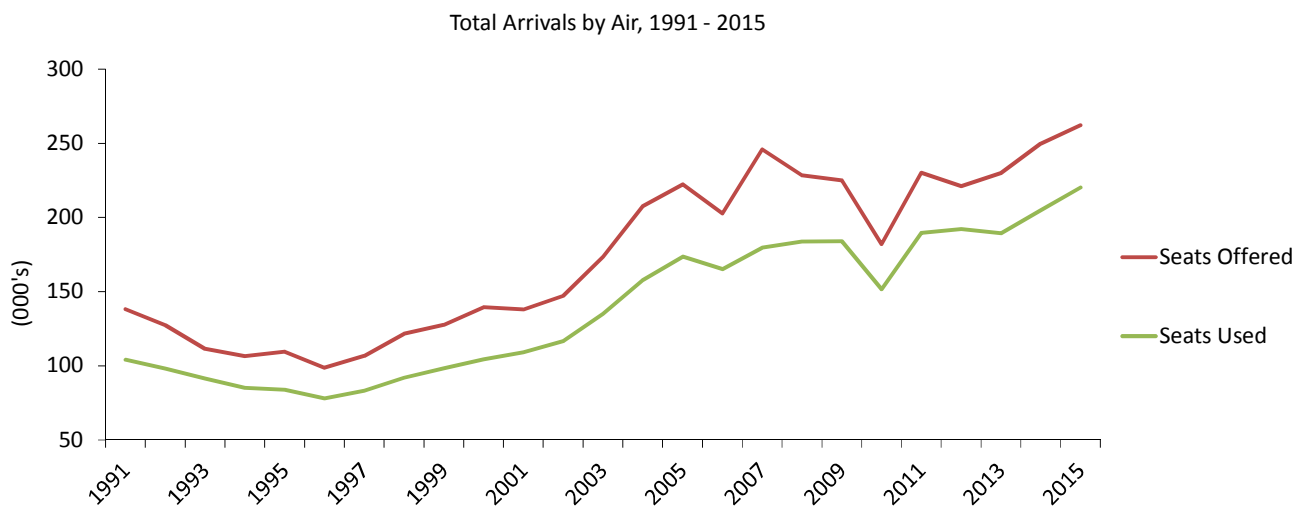
Tables		Page
<b>1.</b>	<b>Arrivals and Departures by Air</b>	
1.01	Arrivals/Departures by Air, 1991 - 2015	1
<b>2.</b>	<b>Arrivals by Air (Scheduled Flights)</b>	
2.01	Arrivals by Air from U.K., 1991 - 1994	2
2.02	Arrivals by Air from U.K., 1995 - 1998	2
2.03	Arrivals by Air from U.K., 1999 - 2002	3
2.04	Arrivals by Air from U.K., 2003 - 2006	3
2.05	Arrivals by Air from U.K., 2007 - 2009	4
2.06	Arrivals by Air from U.K., 2010 - 2012	4
2.07	Arrivals by Air from U.K., 2013 - 2015	5
2.08	Arrivals by Air from Spain, 2008 - 2010	6
2.09	Arrivals by Air from Tangier, 2015	7
<b>3.</b>	<b>Departures by Air (Scheduled Flights)</b>	
3.01	Departures by Air to U.K., 1991 - 1993	8
3.02	Departures by Air to U.K., 1994 - 1996	8
3.03	Departures by Air to U.K., 1997 - 1999	9
3.04	Departures by Air to U.K., 2000 - 2002	9
3.05	Departures by Air to U.K., 2003 - 2005	10
3.06	Departures by Air to U.K., 2006 - 2008	10
3.07	Departures by Air to U.K., 2009 - 2010	11
3.08	Departures by Air to U.K., 2011 - 2012	11
3.09	Departures by Air to U.K., 2013 - 2015	12
3.10	Departures by Air to Spain, 2008 - 2010	13
3.11	Departures by Air to Tangier, 2015	14
<b>4.</b>	<b>Arrivals by Air (Charter Flights)</b>	
4.01	Arrivals by Air, 2000 - 2002	15
4.02	Arrivals by Air, 2003 - 2005	15
4.03	Arrivals by Air, 2006 - 2007, 2009	16
4.04	Arrivals by Air, 2010, 2014 - 2015	16
<b>5.</b>	<b>Departures by Air (Charter Flights)</b>	
5.01	Departures by Air, 2000 - 2002	17
5.02	Departures by Air, 2003 - 2005	17
5.03	Departures by Air, 2006 - 2007, 2009	18
5.04	Departures by Air, 2010, 2014 - 2015	18
<b>6.</b>	<b>Aircraft Arrivals</b>	
6.01	Aircraft Arrivals, 2008 - 2015	19
<b>7.</b>	<b>Commercial Freight</b>	
7.01	Set Down and Picked Up by Air, Gibraltar, 1991 - 2015	20



1: Arrivals and Departures by Air

**Table 1.01 Arrivals/Departures by Air, 1991 - 2015**

Year	Arrivals (000's)						Departures (000's)					
	Total		Scheduled		Charter		Total		Scheduled		Charter	
	Seats Offered	Seats Used	Seats Offered	Seats Used	Seats Offered	Seats Used	Seats Offered	Seats Used	Seats Offered	Seats Used	Seats Offered	Seats Used
1991	138.1	104.0	126.0	94.9	12.1	9.1	140.2	106.3	127.8	96.6	12.4	9.7
1992	127.4	98.1	127.0	97.7	0.4	0.4	128.2	101.0	127.7	100.5	0.5	0.4
1993	111.5	91.3	111.4	91.2	0.1	0.1	112.2	93.3	112.2	93.3	-	-
1994	106.4	85.2	106.4	85.2	-	-	107.1	86.9	207.2	86.9	-	-
1995	109.4	83.8	109.4	83.8	-	-	109.5	85.3	109.5	85.3	-	-
1996	98.7	78.1	98.7	78.1	-	-	98.1	78.2	98.1	78.2	-	-
1997	106.6	83.2	106.6	83.2	-	-	104.4	81.5	104.4	81.5	-	-
1998	121.5	92.0	120.4	91.0	1.2	1.1	120.2	91.0	119.0	90.1	1.2	0.9
1999	127.5	98.3	126.5	97.8	1.0	0.5	127.5	97.9	126.5	97.4	1.0	0.5
2000	139.4	104.3	138.6	103.7	0.8	0.5	138.9	107.1	138.1	106.6	0.8	0.5
2001	138.0	109.0	137.7	108.8	0.3	0.2	138.2	110.6	137.9	110.5	0.4	0.2
2002	147.2	116.6	146.3	115.7	0.9	0.9	147.0	114.8	146.1	114.0	0.9	0.9
2003	173.5	135.0	170.3	133.0	3.3	2.0	173.1	134.8	169.8	132.9	3.3	1.9
2004	207.6	157.9	206.4	157.0	1.2	0.9	207.6	158.3	206.4	157.3	1.2	0.9
2005	222.4	173.5	221.6	172.7	0.8	0.8	222.2	174.4	221.4	173.7	0.8	0.7
2006	202.7	165.2	202.0	164.6	0.7	0.6	202.6	166.0	201.9	165.4	0.7	0.6
2007	245.9	179.7	244.1	179.3	1.8	0.5	246.2	181.6	244.3	180.6	1.8	1.0
2008	228.3	183.7	228.3	183.7	-	-	228.3	187.3	228.3	187.3	-	-
2009	225.0	183.9	224.8	183.7	0.2	0.2	224.9	186.2	224.7	186.0	0.2	0.2
2010	181.9	151.5	181.0	151.0	0.8	0.5	182.0	152.7	181.2	152.1	0.8	0.6
2011	230.1	189.5	230.1	189.5	-	-	230.1	193.5	230.1	193.5	-	-
2012	221.0	192.2	221.0	192.2	-	-	221.2	193.6	221.2	193.6	-	-
2013	229.9	189.4	229.9	189.4	-	-	227.6	193.4	227.6	193.4	-	-
2014	249.7	204.9	248.7	204.6	1.0	0.3	249.8	209.4	248.8	209.1	1.0	0.3
2015	262.1	220.2	261.8	220.0	0.3	0.2	262.4	221.7	262.2	221.5	0.3	0.2



## 2: Arrivals by Air (Scheduled Flights)

**Table 2.01 Arrivals by Air from U.K. (Scheduled Flights), 1991 - 1994**

	Seats used (000's)				Seats offered (000's)				Load factor (%)			
	1991	1992	1993	1994	1991	1992	1993	1994	1991	1992	1993	1994
January	7.3	6.2	5.7	5.1	12.2	10.0	7.4	7.1	59.3	61.2	77.9	71.3
February	6.8	6.2	5.5	5.0	10.4	8.7	6.1	5.9	65.9	71.0	90.7	83.5
March	7.4	7.7	7.1	6.9	9.2	9.2	7.5	7.4	81.3	83.0	95.9	93.8
April	6.7	9.1	8.2	6.7	7.9	12.8	10.2	9.4	84.1	71.1	79.9	71.0
May	7.5	9.3	8.6	8.3	8.3	12.5	11.1	9.9	90.7	74.1	76.7	83.2
June	7.9	9.6	8.6	8.3	9.5	12.0	11.1	10.6	83.5	79.8	77.7	79.0
July	10.8	11.5	10.1	9.6	12.3	12.5	10.9	10.8	88.1	92.2	92.3	89.0
August	9.7	9.8	8.8	8.4	11.9	12.6	11.0	11.2	81.3	77.4	79.9	75.4
September	9.0	6.9	8.7	8.3	11.5	8.3	10.7	10.2	78.1	82.9	81.5	80.8
October	8.6	9.0	7.9	7.5	11.7	11.9	11.2	9.8	74.0	75.6	70.5	76.3
November	6.7	6.6	6.1	5.3	11.1	8.8	7.3	6.9	60.4	74.7	84.0	76.3
December	6.5	6.0	5.8	5.9	10.2	7.5	6.9	7.2	63.4	79.5	84.8	82.4
<b>Total</b>	<b>94.9</b>	<b>97.7</b>	<b>91.2</b>	<b>85.2</b>	<b>126.0</b>	<b>127.0</b>	<b>111.4</b>	<b>106.4</b>	<b>75.3</b>	<b>76.9</b>	<b>81.9</b>	<b>80.0</b>

**Table 2.02 Arrivals by Air from U.K. (Scheduled Flights), 1995 - 1998**

	Seats used (000's)				Seats offered (000's)				Load factor (%)			
	1995	1996	1997	1998	1995	1996	1997	1998	1995	1996	1997	1998
January	4.1	4.6	4.6	4.8	7.8	7.7	7.9	9.4	53.0	53.9	57.8	51.1
February	5.6	5.5	5.2	6.0	6.6	7.7	6.3	9.0	84.2	68.9	83.0	66.4
March	7.3	7.0	6.1	7.6	7.8	8.4	6.9	9.8	93.8	83.7	87.4	78.1
April	7.7	6.3	5.4	7.8	10.1	8.5	6.6	10.0	76.0	74.3	82.3	77.9
May	8.1	7.7	8.6	9.0	10.3	9.0	9.9	11.4	78.1	86.4	86.4	79.0
June	7.6	7.5	7.6	8.0	9.8	8.7	9.4	10.9	77.0	85.6	80.2	73.6
July	8.8	7.6	8.6	9.3	10.3	8.4	9.5	10.6	85.8	90.7	90.8	87.3
August	7.8	6.6	8.3	9.2	10.1	7.5	10.0	11.2	77.7	87.8	83.4	82.2
September	7.2	7.2	8.1	8.4	9.3	8.4	10.7	10.7	77.7	86.4	75.6	78.0
October	7.3	6.6	8.5	8.2	10.0	8.5	10.4	11.2	73.7	78.3	81.1	73.1
November	5.8	5.8	5.9	6.5	8.4	7.8	9.2	8.4	69.5	74.5	63.7	78.0
December	6.5	5.7	6.4	6.3	8.9	8.1	9.8	7.9	73.8	70.7	65.8	79.7
<b>Total</b>	<b>83.8</b>	<b>78.1</b>	<b>83.2</b>	<b>91.0</b>	<b>109.4</b>	<b>98.7</b>	<b>106.6</b>	<b>120.4</b>	<b>76.7</b>	<b>79.1</b>	<b>78.0</b>	<b>75.6</b>

## 2: Arrivals by Air (Scheduled Flights)

**Table 2.03 Arrivals by Air from U.K. (Scheduled Flights), 1999 - 2002**

	Seats used (000's)				Seats offered (000's)				Load factor (%)			
	1999	2000	2001	2002	1999	2000	2001	2002	1999	2000	2001	2002
January	5.2	4.6	5.4	5.5	8.4	11.1	9.4	9.3	62.5	41.5	57.3	59.6
February	6.3	6.2	6.9	7.6	7.4	9.8	8.3	8.9	84.5	63.6	82.7	85.9
March	8.1	8.7	8.6	10.2	8.8	10.7	9.8	11.7	91.4	81.3	87.9	87.4
April	7.8	9.1	9.0	8.0	9.8	10.4	10.6	10.7	80.4	87.2	84.5	75.2
May	10.0	10.1	11.1	10.4	12.5	13.4	13.2	14.1	80.3	75.9	83.6	73.8
June	9.8	9.7	11.0	10.4	11.8	12.4	12.8	13.3	82.7	78.3	85.7	78.3
July	10.7	10.8	11.7	13.2	12.4	13.4	13.5	14.6	85.8	80.8	86.6	90.4
August	9.2	10.1	10.5	12.2	11.6	12.9	13.4	14.3	79.2	78.1	78.3	85.5
September	8.9	10.5	10.2	11.4	11.8	12.7	12.8	13.6	75.6	82.5	79.5	83.6
October	8.3	10.0	9.5	11.0	11.7	13.4	13.4	14.4	70.3	74.6	70.9	76.4
November	6.5	7.0	7.5	8.0	9.7	9.1	10.6	10.7	67.0	76.2	71.1	74.7
December	7.1	7.0	7.5	7.6	10.6	9.3	9.7	10.7	66.9	75.0	76.5	71.4
<b>Total</b>	<b>97.8</b>	<b>103.7</b>	<b>108.8</b>	<b>115.7</b>	<b>126.5</b>	<b>138.6</b>	<b>137.7</b>	<b>146.3</b>	<b>77.3</b>	<b>74.9</b>	<b>79.0</b>	<b>79.1</b>

**Table 2.04 Arrivals by Air from U.K. (Scheduled Flights), 2003 - 2006**

	Seats used (000's)				Seats offered (000's)				Load factor (%)			
	2003	2004	2005	2006	2003	2004	2005	2006	2003	2004	2005	2006
January	6.5	7.5	10.0	9.7	11.4	12.4	15.9	15.5	57.4	60.0	62.7	62.7
February	7.9	9.2	10.5	10.7	9.3	11.9	14.4	14.8	84.8	77.8	73.2	72.5
March	10.3	12.4	13.4	14.6	13.2	15.4	16.6	17.6	78.2	80.7	80.7	83.3
April	11.0	12.9	13.9	15.2	13.2	16.7	17.6	17.8	82.9	77.0	78.9	85.2
May	13.0	14.0	16.0	17.1	16.1	20.2	21.1	19.3	80.9	69.3	75.8	88.6
June	12.2	14.3	16.2	16.8	15.6	19.5	20.4	19.8	78.6	73.4	79.7	84.9
July	14.6	17.5	18.4	17.9	16.1	20.1	21.1	19.6	90.6	87.2	87.4	91.2
August	13.2	16.2	18.2	14.4	16.1	20.2	21.2	17.4	81.8	80.4	85.8	82.9
September	12.0	15.5	17.0	13.9	15.5	19.6	20.5	17.6	77.2	79.0	83.3	79.0
October	12.3	14.3	16.4	13.8	15.9	20.3	20.9	17.4	77.5	70.6	78.4	79.5
November	10.2	11.7	11.5	9.8	14.1	15.2	16.7	11.7	71.9	76.8	69.0	83.7
December	9.8	11.6	11.1	10.7	13.8	15.0	15.3	13.6	71.3	77.0	72.7	78.8
<b>Total</b>	<b>133.0</b>	<b>157.0</b>	<b>172.7</b>	<b>164.6</b>	<b>170.3</b>	<b>206.4</b>	<b>221.6</b>	<b>202.0</b>	<b>78.1</b>	<b>76.1</b>	<b>77.9</b>	<b>81.5</b>

## 2: Arrivals by Air (Scheduled Flights)

**Table 2.05 Arrivals by Air from U.K. (Scheduled Flights), 2007 - 2009**

	Seats used (000's)			Seats offered (000's)			Load factor (%)		
	2007	2008	2009	2007	2008	2009	2007	2008	2009
January	7.8	9.0	10.9	11.4	13.0	15.6	68.7	69.4	69.8
February	7.8	8.6	12.2	10.8	10.4	15.5	72.3	83.2	79.1
March	9.6	11.3	16.1	12.7	12.3	18.7	75.4	91.2	86.5
April	11.1	15.1	16.3	14.0	18.3	19.3	79.6	82.8	84.7
May	13.7	16.8	17.0	16.8	19.4	18.8	81.1	86.8	90.3
June	13.4	15.8	17.0	16.4	18.9	18.5	81.7	83.4	92.0
July	15.5	19.4	17.7	16.9	21.4	19.1	91.7	90.6	92.9
August	13.4	18.1	16.3	16.4	21.3	18.8	81.7	85.2	86.8
September	14.1	17.7	15.9	16.4	22.2	18.4	85.9	79.7	86.3
October	14.1	18.1	15.6	17.0	22.2	18.4	82.5	81.1	84.7
November	11.2	13.9	11.1	13.2	19.4	14.1	84.7	71.7	79.1
December	10.5	15.2	10.6	12.7	18.7	13.1	82.6	81.2	80.8
<b>Total</b>	<b>142.1</b>	<b>179.0</b>	<b>176.8</b>	<b>174.8</b>	<b>217.5</b>	<b>208.1</b>	<b>81.3</b>	<b>82.3</b>	<b>84.9</b>

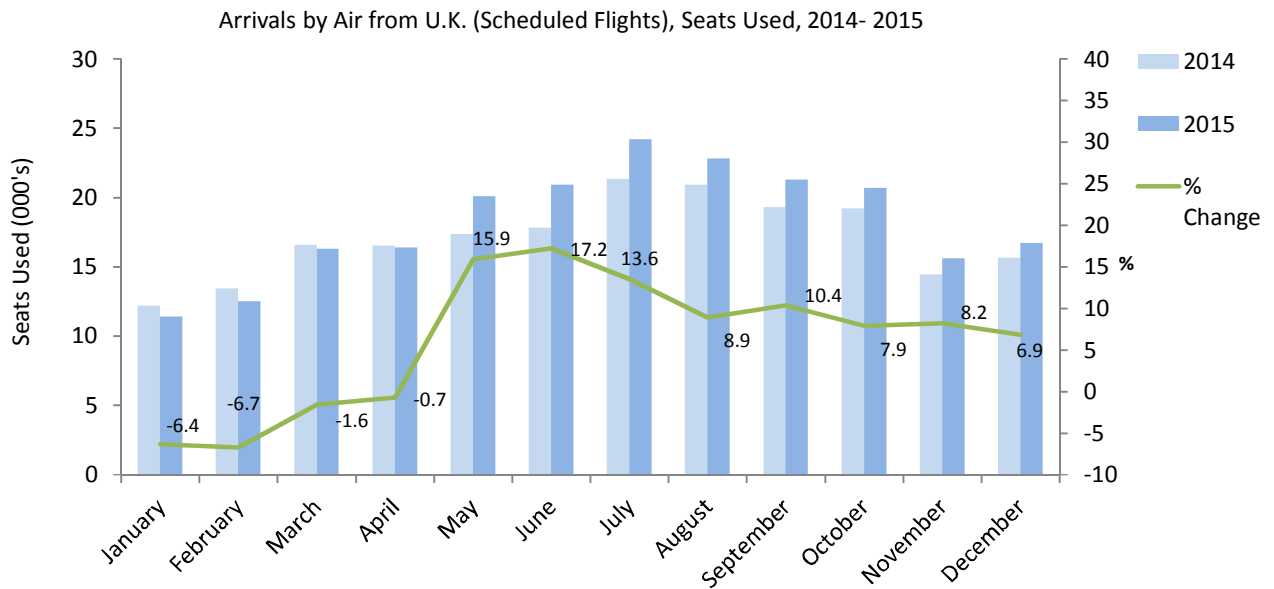
**Table 2.06 Arrivals by Air from U.K. (Scheduled Flights), 2010 - 2012**

	Seats used (000's)			Seats offered (000's)			Load factor (%)		
	2010	2011	2012	2010	2011	2012	2010	2011	2012
January	9.0	9.1	11.4	13.0	14.0	15.8	69.1	65.4	72.3
February	9.5	10.1	12.9	11.6	13.4	15.0	81.5	75.0	86.4
March	12.1	12.8	15.9	14.0	16.1	17.0	86.3	79.8	93.4
April	9.7	15.3	16.2	11.5	18.5	20.2	84.4	83.0	80.1
May	13.4	17.1	16.9	15.7	21.3	19.1	85.0	80.5	88.8
June	14.2	18.2	18.3	15.7	22.3	20.1	90.6	81.8	90.9
July	15.1	21.5	20.8	16.2	23.9	21.9	93.3	89.9	95.3
August	14.9	21.5	19.8	16.2	24.1	21.7	91.6	89.2	91.1
September	14.4	18.8	17.4	16.4	22.4	19.7	87.6	84.0	88.4
October	15.1	17.1	17.1	18.2	20.8	19.7	83.0	82.4	87.0
November	11.9	13.8	12.1	15.6	16.8	15.0	76.2	82.2	80.6
December	10.9	14.1	13.4	13.7	16.7	16.0	79.2	84.5	83.7
<b>Total</b>	<b>150.1</b>	<b>189.5</b>	<b>192.2</b>	<b>178.0</b>	<b>230.1</b>	<b>221.0</b>	<b>84.3</b>	<b>82.4</b>	<b>86.9</b>

2: Arrivals by Air (Scheduled Flights)

**Table 2.07 Arrivals by Air from U.K. (Scheduled Flights), 2013 - 2015**

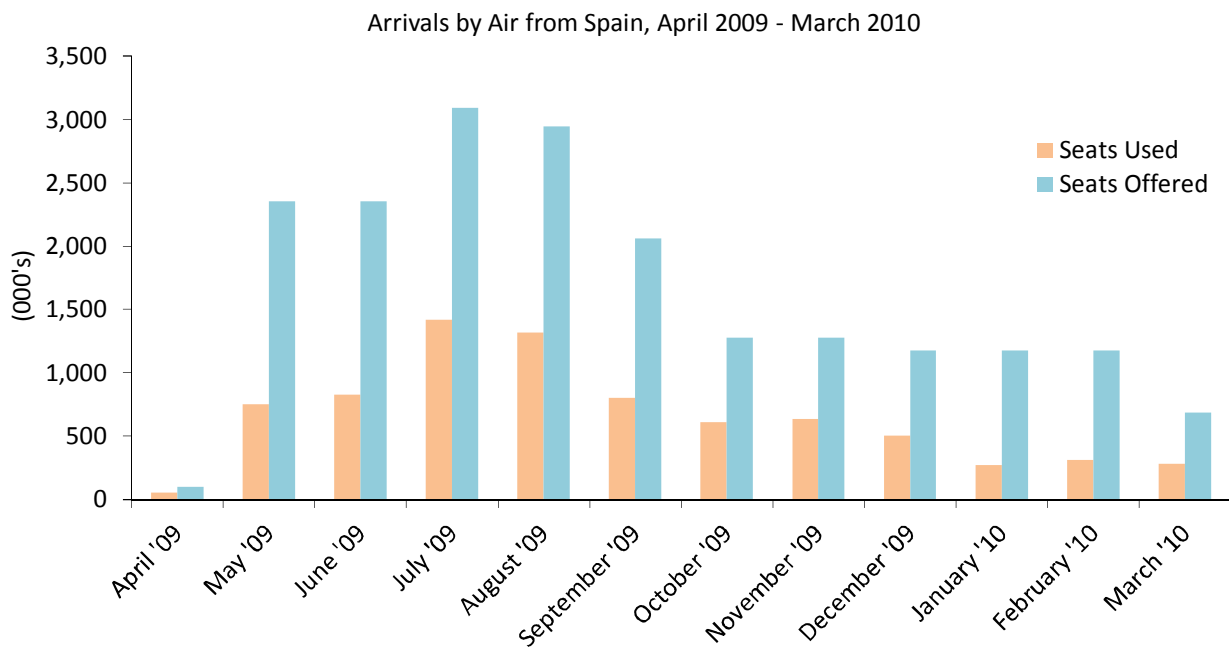
	Seats used (000's)			Seats offered (000's)			Load factor (%)		
	2013	2014	2015	2013	2014	2015	2013	2014	2015
January	8.9	12.2	11.4	13.5	18.3	16.3	66.1	66.4	70.1
February	12.0	13.4	12.5	13.8	17.6	15.4	86.6	76.4	80.7
March	14.8	16.6	16.3	16.3	19.7	17.7	90.6	84.1	92.0
April	13.6	16.5	16.4	17.4	19.5	19.4	78.1	84.8	84.3
May	16.6	17.3	20.1	19.5	20.4	22.9	85.0	84.9	87.9
June	18.0	17.8	20.9	20.7	21.2	23.7	87.1	84.0	88.1
July	21.1	21.3	24.2	23.0	23.8	25.2	91.6	89.6	96.1
August	19.7	20.9	22.8	22.7	24.4	25.7	86.7	85.7	88.8
September	18.6	19.3	21.3	22.8	23.3	24.6	81.7	83.0	86.4
October	17.5	19.2	20.7	22.3	22.2	24.9	78.4	86.6	83.0
November	14.0	14.4	15.6	19.0	19.5	20.5	73.9	73.9	75.9
December	14.6	15.6	16.7	18.9	18.9	19.9	77.4	82.7	83.9
<b>Total</b>	<b>189.4</b>	<b>204.6</b>	<b>218.7</b>	<b>229.9</b>	<b>248.7</b>	<b>256.2</b>	<b>82.4</b>	<b>82.3</b>	<b>85.4</b>



## 2: Arrivals by Air (Scheduled Flights)

**Table 2.08 Arrivals by Air from Spain (Scheduled Flights), 2008 - 2010**

	Seats used (000's)			Seats offered (000's)			Load factor (%)		
	2008	2009	2010	2008	2009	2010	2008	2009	2010
January	0.3	-	0.3	1.1	-	1.2	29.6	-	23.0
February	0.5	-	0.3	1.3	-	1.2	36.0	-	26.4
March	0.5	-	0.3	1.3	-	0.7	42.3	-	40.5
April	0.3	0.1	-	1.1	0.1	-	26.6	51.0	-
May	0.4	0.7	-	1.3	2.4	-	32.5	31.8	-
June	0.5	0.8	-	1.0	2.4	-	53.5	35.1	-
July	0.7	1.4	-	1.1	3.1	-	63.4	45.9	-
August	0.8	1.3	-	1.4	2.9	-	57.0	44.8	-
September	0.6	0.8	-	1.1	2.1	-	49.7	38.8	-
October	-	0.6	-	-	1.3	-	-	47.8	-
November	-	0.6	-	-	1.3	-	-	49.6	-
December	-	0.5	-	-	1.2	-	-	42.9	-
<b>Total</b>	<b>4.7</b>	<b>6.9</b>	<b>0.9</b>	<b>10.7</b>	<b>16.6</b>	<b>3.0</b>	<b>43.3</b>	<b>41.5</b>	<b>28.3</b>

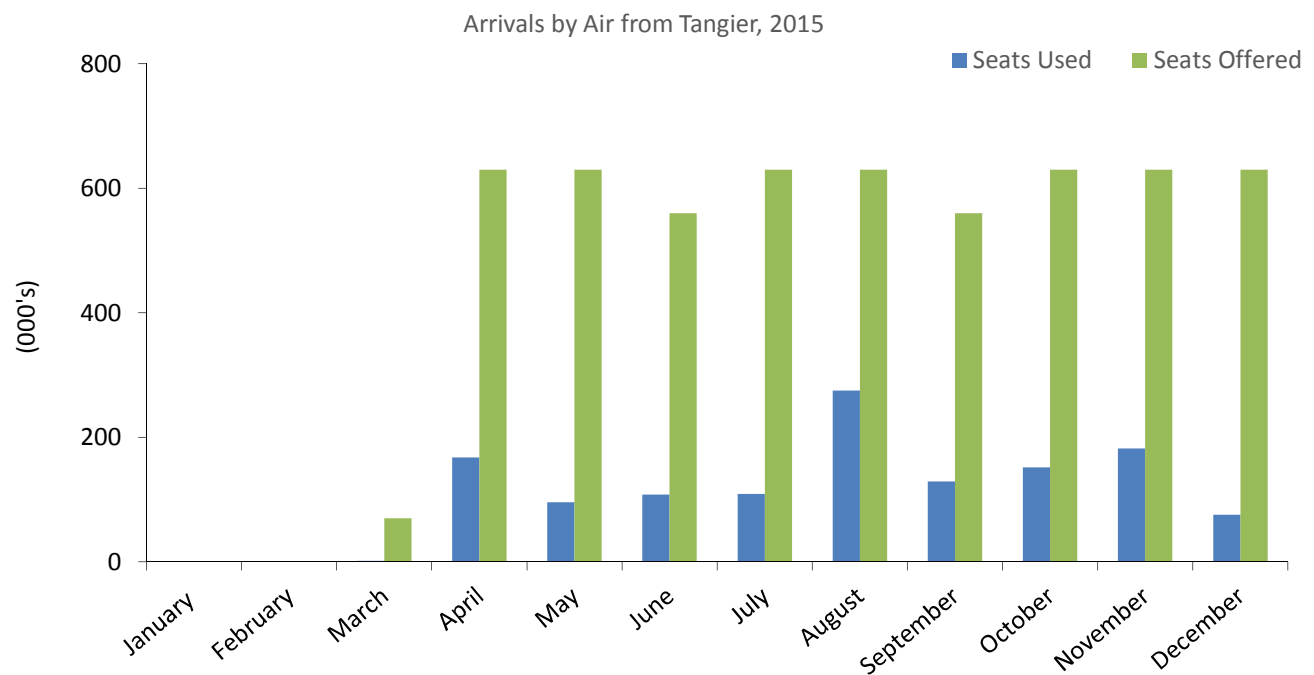




2: Arrivals by Air (Scheduled Flights)

**Table 2.09 Arrivals by Air from Tangier (Scheduled Flights), 2015**

	Seats used (000's)	Seats offered (000's)	Load factor (%)
	2015	2015	2015
January	-	-	-
February	-	-	-
March	-	0.1	2.9
April	0.2	0.6	26.7
May	0.1	0.6	15.2
June	0.1	0.6	19.3
July	0.1	0.6	17.3
August	0.3	0.6	43.7
September	0.1	0.6	23.0
October	0.2	0.6	24.1
November	0.2	0.6	28.9
December	0.1	0.6	12.1
<b>Total</b>	<b>1.3</b>	<b>5.6</b>	<b>23.2</b>



## 3: Departures by Air (Scheduled Flights)

**Table 3.01 Departures by Air to U.K. (Scheduled Flights), 1991 - 1993**

	Seats used (000's)			Seats offered (000's)			Load factor (%)					
	1991	1992	1993	1991	1992	1993	1991		1992		1993	
							(i)	(ii)	(i)	(ii)	(i)	(ii)
January	7.5	6.7	6.1	12.1	10.2	7.6	62.1	(60.6)	65.9	(64.8)	80.5	(79.3)
February	6.7	6.2	5.4	10.3	8.6	6.4	65.4	(63.2)	72.5	(70.2)	83.8	(82.9)
March	6.2	7.0	6.7	8.7	9.2	7.8	71.3	(69.1)	76.0	(73.8)	86.1	(84.7)
April	7.8	9.5	8.3	8.6	12.8	10.0	90.2	(87.6)	74.3	(73.2)	82.3	(81.0)
May	6.9	8.6	7.9	8.2	12.6	11.1	83.6	(81.0)	68.1	(66.8)	71.3	(69.8)
June	7.9	9.8	9.4	9.8	12.2	11.1	80.5	(77.9)	80.4	(79.1)	84.1	(82.9)
July	9.2	9.8	8.7	12.4	12.5	11.3	73.8	(71.2)	78.5	(76.7)	77.5	(76.7)
August	11.0	11.5	10.0	12.3	12.8	10.9	89.5	(87.0)	89.7	(88.8)	91.4	(90.5)
September	9.9	7.6	9.7	12.2	8.2	10.5	81.7	(78.7)	91.9	(90.2)	92.2	(91.0)
October	10.1	10.5	9.5	12.1	11.9	11.1	83.3	(81.5)	87.7	(85.9)	86.0	(85.0)
November	7.3	7.8	6.5	10.9	9.0	7.3	67.0	(65.4)	86.0	(84.2)	88.8	(87.3)
December	6.1	5.6	5.1	10.2	7.6	6.9	59.7	(58.5)	73.8	(72.5)	73.2	(72.4)
<b>Total</b>	<b>96.6</b>	<b>100.5</b>	<b>93.3</b>	<b>127.8</b>	<b>127.7</b>	<b>112.2</b>	<b>75.6</b>	<b>(73.3)</b>	<b>78.7</b>	<b>(77.2)</b>	<b>83.2</b>	<b>(82.0)</b>

**Table 3.02 Departures by Air to U.K. (Scheduled Flights), 1994 - 1996**

	Seats used (000's)			Seats offered (000's)			Load factor (%)					
	1994	1995	1996	1994	1995	1996	1994		1995		1996	
							(i)	(ii)	(i)	(ii)	(i)	(ii)
January	5.8	5.5	5.3	7.1	7.8	7.7	81.9	(80.8)	70.8	(70.3)	69.4	(69.0)
February	5.0	5.2	5.6	6.2	6.9	8.2	81.7	(80.1)	75.1	(74.4)	68.1	(67.6)
March	5.5	6.6	6.3	7.5	7.7	8.1	74.1	(72.9)	85.1	(84.6)	77.1	(76.4)
April	7.6	8.3	7.0	9.3	10.3	8.7	81.9	(81.2)	80.5	(80.3)	81.0	(80.7)
May	7.6	7.3	7.0	10.1	10.4	8.7	76.3	(75.2)	69.8	(69.4)	79.9	(79.5)
June	8.7	8.2	8.1	10.4	9.9	9.1	84.8	(83.7)	82.5	(82.0)	89.5	(89.1)
July	8.4	7.9	6.8	10.9	10.3	8.6	77.0	(77.5)	76.5	(76.0)	79.1	(79.0)
August	9.7	8.5	6.8	10.9	10.3	7.6	89.0	(88.3)	82.8	(82.4)	89.7	(89.5)
September	9.3	8.4	8.0	10.2	9.6	8.5	91.8	(91.2)	87.6	(87.0)	93.5	(93.2)
October	8.9	8.3	7.3	10.2	9.9	8.3	88.3	(87.5)	83.0	(82.4)	88.6	(88.2)
November	5.6	6.3	5.9	6.8	8.5	7.6	83.3	(82.4)	73.8	(73.1)	77.7	(77.1)
December	4.8	4.8	4.1	7.2	7.9	7.0	67.3	(66.9)	61.5	(60.8)	58.8	(58.4)
<b>Total</b>	<b>86.9</b>	<b>85.3</b>	<b>78.2</b>	<b>107.1</b>	<b>109.5</b>	<b>98.1</b>	<b>81.2</b>	<b>(80.3)</b>	<b>77.8</b>	<b>(77.3)</b>	<b>79.6</b>	<b>(79.0)</b>

## Notes:

(i) Passenger load factor.

(ii) Revenue load factor.

## 3: Departures by Air (Scheduled Flights)

**Table 3.03 Departures by Air to U.K. (Scheduled Flights), 1997 - 1999**

	Seats used (000's)			Seats offered (000's)			Load factor (%)					
	1997	1998	1999	1997	1998	1999	1997		1998		1999	
							(i)	(ii)	(i)	(ii)	(i)	(ii)
January	4.7	6.0	6.3	6.8	9.5	8.5	68.5 (67.4)		63.1 (62.7)		74.1 (73.9)	
February	5.1	5.3	5.7	6.4	8.7	7.5	79.4 (78.3)		60.7 (60.2)		75.1 (74.3)	
March	5.2	6.7	7.0	6.8	9.9	8.5	76.4 (75.5)		67.9 (67.9)		82.8 (82.7)	
April	6.1	8.2	8.7	6.7	10.0	9.8	90.1 (89.7)		81.9 (81.7)		89.0 (88.5)	
May	7.7	8.0	8.9	9.6	11.2	12.5	79.8 (79.2)		71.3 (70.9)		71.0 (71.0)	
June	7.9	8.1	10.0	9.5	10.8	11.6	83.2 (83.0)		74.6 (74.2)		86.3 (86.3)	
July	7.5	7.7	9.4	9.7	10.3	12.5	77.0 (76.7)		74.5 (74.3)		75.7 (75.7)	
August	8.7	9.9	9.6	9.5	11.1	11.4	91.7 (91.4)		89.5 (89.4)		84.7 (84.7)	
September	8.8	9.2	10.2	10.5	10.4	11.8	83.8 (83.5)		88.5 (88.4)		86.3 (86.3)	
October	8.6	8.9	9.0	9.6	11.0	11.8	90.0 (89.6)		80.5 (80.3)		76.4 (76.4)	
November	6.5	7.1	7.4	9.2	8.3	10.0	70.3 (70.0)		84.9 (84.4)		74.4 (74.4)	
December	4.7	5.0	5.1	10.1	7.6	10.6	46.3 (46.1)		66.2 (65.5)		48.0 (47.9)	
<b>Total</b>	<b>81.5</b>	<b>90.1</b>	<b>97.4</b>	<b>104.4</b>	<b>119.0</b>	<b>126.5</b>	<b>78.1 (77.6)</b>		<b>75.7 (75.4)</b>		<b>77.0 (76.9)</b>	

**Table 3.04 Departures by Air to U.K. (Scheduled Flights), 2000 - 2002**

	Seats used (000's)			Seats offered (000's)			Load factor (%)					
	2000	2001	2002	2000	2001	2002	2000		2001		2002	
							(i)	(ii)	(i)	(ii)	(i)	(ii)
January	6.5	6.6	6.4	11.1	9.4	9.5	58.8 (58.7)		70.2 (70.2)		67.7 (67.7)	
February	6.0	6.6	7.0	9.8	8.4	8.9	61.5 (61.4)		78.9 (78.9)		78.4 (78.4)	
March	8.0	7.9	8.4	10.6	9.8	11.1	75.2 (74.9)		81.0 (81.0)		75.7 (75.7)	
April	9.1	9.4	9.3	10.1	10.6	10.7	89.4 (89.3)		87.9 (87.9)		86.5 (86.5)	
May	9.9	10.2	9.4	13.3	13.3	14.1	74.5 (74.5)		76.7 (76.7)		66.5 (66.5)	
June	10.5	11.0	10.5	12.4	12.9	13.3	84.9 (84.8)		85.7 (85.7)		79.1 (79.1)	
July	9.8	10.3	10.8	13.4	13.5	14.8	73.0 (72.9)		76.0 (76.0)		72.9 (72.9)	
August	10.6	11.5	13.1	12.7	13.4	14.5	83.6 (83.5)		85.4 (85.4)		90.5 (90.5)	
September	11.7	11.1	12.6	12.8	12.8	13.6	91.4 (91.2)		86.6 (86.6)		92.7 (92.7)	
October	11.1	11.3	11.7	13.2	13.5	14.4	84.2 (84.1)		83.9 (83.9)		81.3 (81.3)	
November	7.5	8.5	8.6	9.2	10.7	10.7	82.1 (82.0)		79.9 (79.9)		80.6 (80.6)	
December	5.7	6.0	6.2	9.3	9.5	10.5	61.3 (60.8)		63.2 (63.2)		58.8 (58.8)	
<b>Total</b>	<b>106.6</b>	<b>110.5</b>	<b>114.0</b>	<b>138.1</b>	<b>137.9</b>	<b>146.1</b>	<b>77.2 (77.1)</b>		<b>80.1 (80.1)</b>		<b>78.0 (78.0)</b>	

## Notes:

(i) Passenger load factor.

(ii) Revenue load factor.

## 3: Departures by Air (Scheduled Flights)

Table 3.05 Departures by Air to U.K. (Scheduled Flights), 2003 - 2005

	Seats used (000's)			Seats offered (000's)			Load factor (%)					
	2003	2004	2005	2003	2004	2005	2003		2004		2005	
							(i)	(ii)	(i)	(ii)	(i)	(ii)
January	7.5	8.7	11.9	11.4	12.4	15.8	66.2	(66.2)	70.0	(69.9)	75.4	(75.4)
February	7.3	9.1	10.2	9.3	11.9	14.4	77.8	(77.8)	76.2	(76.2)	70.8	(70.8)
March	10.1	11.6	11.8	13.2	15.4	16.6	76.6	(76.6)	75.3	(75.3)	71.1	(71.1)
April	10.5	13.0	14.4	12.9	16.7	17.6	81.1	(81.1)	77.7	(77.7)	81.9	(81.9)
May	12.0	12.3	14.4	16.1	20.2	21.1	74.7	(74.6)	61.0	(61.0)	68.8	(68.8)
June	12.8	15.1	17.2	15.4	19.5	20.5	83.3	(83.3)	77.6	(77.6)	83.7	(83.7)
July	12.0	14.9	16.3	16.1	20.0	21.1	74.7	(74.6)	74.2	(74.2)	77.5	(77.5)
August	14.6	17.9	18.8	16.1	20.2	21.2	91.0	(91.0)	88.5	(88.5)	88.7	(88.7)
September	13.7	17.1	19.0	15.5	19.6	20.4	88.1	(88.1)	87.2	(87.2)	92.8	(92.8)
October	12.9	15.4	17.5	15.9	20.3	20.9	81.0	(80.9)	75.8	(75.8)	83.8	(83.8)
November	10.9	12.6	12.6	14.1	15.2	16.6	77.4	(77.4)	83.1	(83.1)	75.8	(75.8)
December	8.5	9.8	9.6	13.8	15.0	15.1	61.6	(61.6)	64.9	(64.9)	63.3	(63.3)
<b>Total</b>	<b>132.9</b>	<b>157.3</b>	<b>173.7</b>	<b>169.8</b>	<b>206.4</b>	<b>221.4</b>	<b>78.2</b>	<b>(78.2)</b>	<b>76.2</b>	<b>(76.2)</b>	<b>78.5</b>	<b>(78.5)</b>

Table 3.06 Departures by Air to U.K. (Scheduled Flights), 2006 - 2008

	Seats used (000's)			Seats offered (000's)			Load factor (%)					
	2006	2007	2008	2006	2007	2008	2006		2007		2008	
							(i)	(ii)	(i)	(ii)	(i)	(ii)
January	10.5	8.6	9.7	15.7	11.4	13.0	66.6	(66.6)	75.6	(75.6)		74.5
February	10.6	7.9	8.5	14.8	10.8	10.4	72.1	(72.1)	73.0	(73.0)		81.7
March	13.2	8.9	10.3	17.6	12.7	12.3	75.5	(75.5)	69.8	(69.8)		83.4
April	15.5	10.9	15.8	17.8	13.9	18.3	87.0	(87.0)	78.2	(78.2)		86.3
May	15.8	12.7	16.2	19.3	17.0	19.4	82.1	(82.1)	74.8	(74.8)		83.3
June	17.7	14.0	16.4	19.8	16.2	18.8	89.3	(89.3)	86.1	(86.1)		87.2
July	16.3	14.1	18.0	19.6	16.9	21.5	83.1	(83.1)	83.7	(83.7)		83.7
August	15.9	14.0	19.6	17.6	16.2	21.3	90.4	(90.4)	86.1	(86.1)		91.8
September	15.4	15.3	20.0	17.2	16.4	22.3	89.5	(89.5)	93.4	(93.4)		89.8
October	14.5	14.9	18.9	17.4	17.2	22.3	83.7	(83.7)	86.7	(86.7)		84.5
November	10.5	12.0	15.8	11.6	13.2	19.4	90.0	(90.0)	91.1	(91.1)		81.2
December	9.5	9.4	13.5	13.6	12.7	18.5	70.0	(70.0)	73.6	(73.6)		72.9
<b>Total</b>	<b>165.4</b>	<b>142.7</b>	<b>182.5</b>	<b>201.9</b>	<b>174.7</b>	<b>217.6</b>	<b>81.9</b>	<b>(81.9)</b>	<b>81.7</b>	<b>(81.7)</b>		<b>83.9</b>

## Notes:

(i) Passenger load factor.

(ii) Revenue load factor.

## 3: Departures by Air (Scheduled Flights)

**Table 3.07 Departures by Air to U.K. (Scheduled Flights), 2009 - 2010**

	Seats used (000's)		Seats offered (000's)		Load factor (%)	
	2009	2010	2009	2010	2009	2010
January	12.5	9.4	15.6	13.0	80.0	71.8
February	12.2	9.1	15.4	11.6	79.1	78.9
March	15.0	10.9	18.7	14.0	80.3	77.5
April	16.6	9.1	19.3	11.5	85.9	77.7
May	16.5	13.0	18.8	15.7	87.7	82.9
June	17.0	14.2	18.5	15.7	91.9	90.6
July	16.6	14.4	19.0	16.2	87.5	89.4
August	17.4	15.5	18.8	16.2	92.7	95.3
September	17.3	15.6	18.4	16.4	93.9	94.7
October	16.4	16.5	18.4	18.2	89.1	90.8
November	12.0	13.2	14.1	15.6	85.2	84.1
December	9.7	10.3	13.1	13.7	74.1	74.9
<b>Total</b>	<b>179.1</b>	<b>151.1</b>	<b>208.1</b>	<b>178.0</b>	<b>86.1</b>	<b>84.8</b>

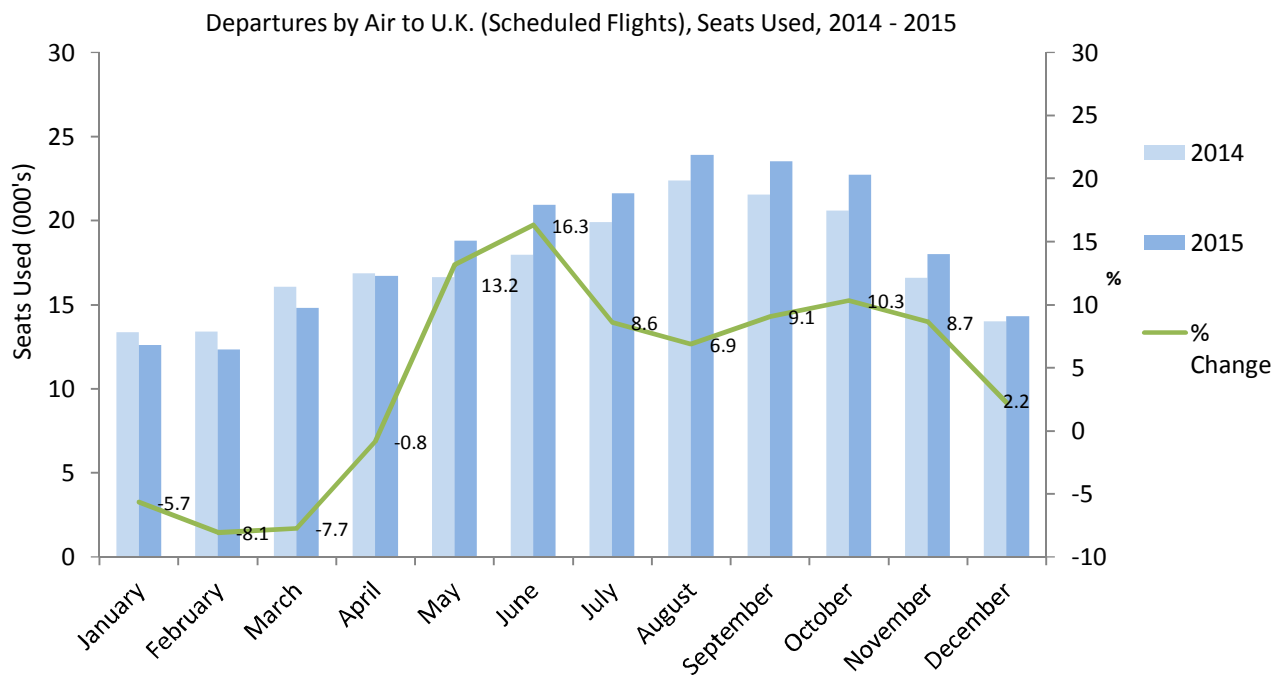
**Table 3.08 Departures by Air to U.K. (Scheduled Flights), 2011 - 2012**

	Seats used (000's)		Seats offered (000's)		Load factor (%)	
	2011	2012	2011	2012	2011	2012
January	10.3	12.4	14.0	15.8	73.4	78.3
February	10.1	12.9	13.4	15.0	75.3	86.3
March	12.5	14.7	16.1	17.1	77.9	86.1
April	14.8	16.9	18.5	20.2	80.3	83.8
May	16.4	15.8	21.3	19.0	77.2	83.2
June	18.9	18.0	22.3	20.1	84.7	89.6
July	19.6	19.3	23.9	21.9	81.9	88.4
August	22.1	20.5	24.1	21.8	92.3	94.3
September	21.4	19.0	22.4	19.7	95.5	96.9
October	18.8	18.4	20.8	19.7	90.3	93.4
November	15.5	13.6	16.8	15.0	91.8	90.4
December	13.1	11.9	16.7	16.0	78.5	74.5
<b>Total</b>	<b>193.5</b>	<b>193.6</b>	<b>230.1</b>	<b>221.2</b>	<b>84.1</b>	<b>87.5</b>

3: Departures by Air (Scheduled Flights)

**Table 3.09 Departures by Air to U.K. (Scheduled Flights), 2013 - 2015**

	Seats used (000's)			Seats offered (000's)			Load factor (%)		
	2013	2014	2015	2013	2014	2015	2013	2014	2015
January	10.1	13.4	12.6	13.5	18.3	16.3	74.9	73.0	77.1
February	11.8	13.4	12.3	13.8	17.6	15.5	84.9	76.0	79.8
March	13.3	16.0	14.8	16.3	19.7	17.7	81.7	81.2	83.5
April	14.7	16.8	16.7	17.4	19.5	19.5	84.0	86.4	85.6
May	15.5	16.6	18.8	19.5	20.4	22.9	79.6	81.4	82.1
June	18.2	18.0	20.9	20.7	21.2	23.8	87.7	84.9	87.7
July	19.5	19.9	21.6	22.8	23.8	25.2	85.3	83.7	85.7
August	21.4	22.4	23.9	22.8	24.4	25.7	93.9	91.5	92.8
September	21.1	21.5	23.5	22.8	23.2	24.6	92.4	92.7	95.6
October	18.2	20.6	22.7	22.3	22.2	24.9	81.5	92.8	91.0
November	15.6	16.6	18.0	19.0	19.5	20.5	82.2	84.7	87.5
December	14.0	14.0	14.3	16.5	18.9	19.9	85.0	73.9	71.7
<b>Total</b>	<b>193.4</b>	<b>209.1</b>	<b>220.0</b>	<b>227.6</b>	<b>248.8</b>	<b>256.6</b>	<b>85.0</b>	<b>84.1</b>	<b>85.7</b>

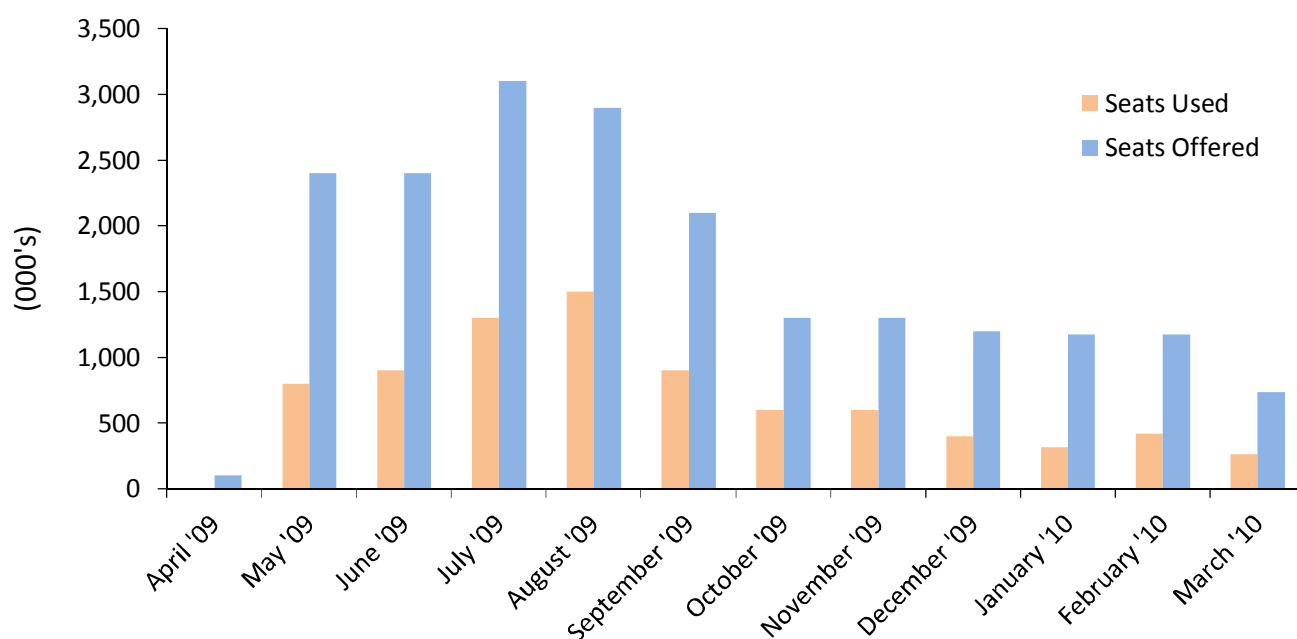


## 3: Departures by Air (Scheduled Flights)

**Table 3.10 Departures by Air to Spain (Scheduled Flights), 2008 - 2010**

	Seats used (000's)			Seats offered (000's)			Load factor (%)		
	2008	2009	2010	2008	2009	2010	2008	2009	2010
January	0.4	-	0.3	1.1	-	1.2	35.7	-	27.0
February	0.4	-	0.4	1.3	-	1.2	34.5	-	35.5
March	0.6	-	0.3	1.3	-	0.7	47.2	-	35.5
April	0.3	-	-	1.1	0.1	-	25.1	29.6	-
May	0.4	0.8	-	1.3	2.4	-	34.0	33.4	-
June	0.6	0.9	-	1.0	2.4	-	56.7	37.4	-
July	0.6	1.3	-	1.1	3.1	-	55.8	41.5	-
August	0.9	1.5	-	1.4	2.9	-	67.3	50.5	-
September	0.5	0.9	-	1.1	2.1	-	45.7	42.2	-
October	-	0.6	-	-	1.3	-	-	44.1	-
November	-	0.6	-	-	1.3	-	-	47.3	-
December	-	0.4	-	-	1.2	-	-	36.3	-
<b>Total</b>	<b>4.8</b>	<b>6.9</b>	<b>1.0</b>	<b>10.7</b>	<b>16.6</b>	<b>3.1</b>	<b>44.8</b>	<b>41.7</b>	<b>32.2</b>

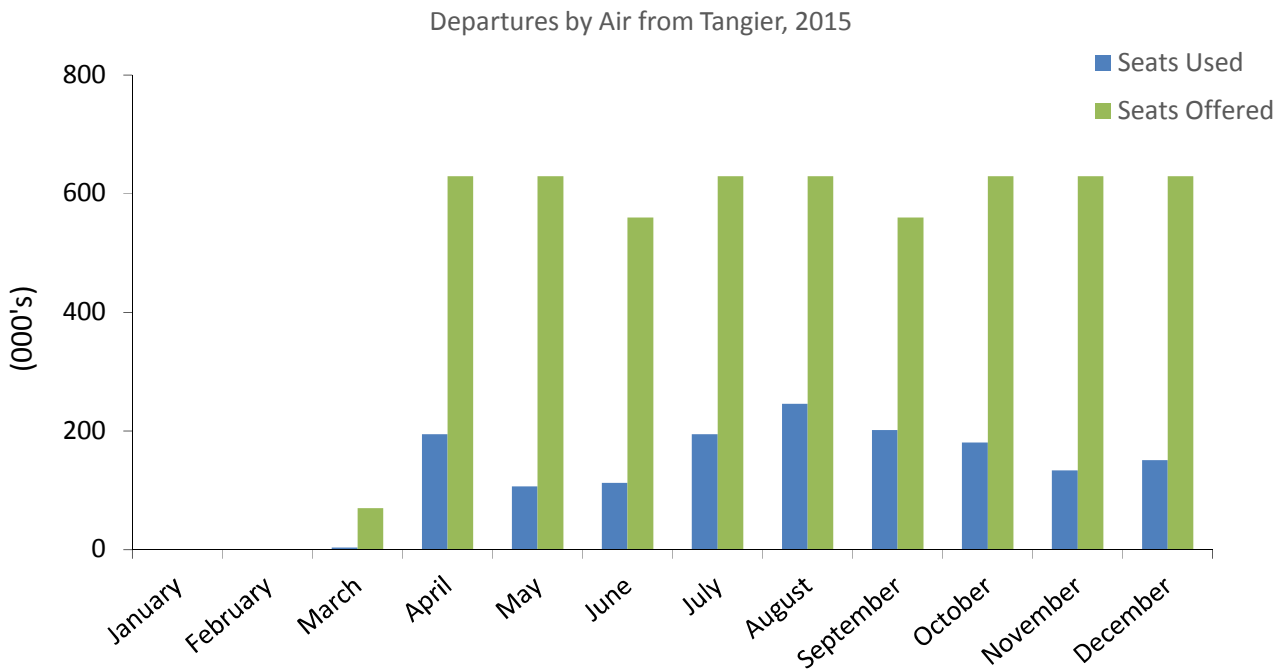
Departures by Air to Spain, April 2009 - March 2010



3: Departures by Air (Scheduled Flights)

**Table 3.11 Departures by Air from Tangier (Scheduled Flights), 2015**

	Seats used (000's)	Seats offered (000's)	Load factor (%)
	2015	2015	2015
January	-	-	-
February	-	-	-
March	-	0.1	5.7
April	0.2	0.6	31.0
May	0.1	0.6	17.0
June	0.1	0.6	20.2
July	0.2	0.6	31.0
August	0.2	0.6	39.0
September	0.2	0.6	36.1
October	0.2	0.6	28.7
November	0.1	0.6	21.3
December	0.2	0.6	24.0
<b>Total</b>	<b>1.5</b>	<b>5.6</b>	<b>27.3</b>





## 4: Arrivals by Air (Charter Flights)

**Table 4.01 Arrivals by Air (Charter Flights), 2000 - 2002**

	Seats used (000's)			Seats offered (000's)			Load factor (%)		
	2000	2001	2002	2000	2001	2002	2000	2001	2002
January	0.1	-	-	0.1	-	-	82.6	100.0	-
February	-	-	-	-	-	-	-	-	-
March	-	-	0.1	-	-	0.1	-	100.0	100.0
April	0.2	0.1	0.2	0.3	0.3	0.2	65.8	42.4	100.0
May	-	-	0.1	-	-	0.1	-	-	100.0
June	-	-	0.1	-	-	0.1	-	-	100.0
July	-	-	0.1	-	-	0.1	-	-	100.0
August	-	-	-	0.1	-	-	94.0	-	-
September	0.1	-	-	0.1	-	-	56.9	-	-
October	-	-	0.1	-	-	0.1	-	55.1	100.0
November	0.1	-	-	0.2	-	-	34.4	-	-
December	-	-	0.1	-	-	0.1	67.5	-	100.0
<b>Total</b>	<b>0.5</b>	<b>0.1</b>	<b>0.9</b>	<b>0.8</b>	<b>0.3</b>	<b>0.9</b>	<b>62.4</b>	<b>50.9</b>	<b>100.0</b>

**Table 4.02 Arrivals by Air (Charter Flights), 2003 - 2005**

	Seats used (000's)			Seats offered (000's)			Load factor (%)		
	2003	2004	2005	2003	2004	2005	2003	2004	2005
January	0.2	-	-	0.3	-	-	61.6	-	-
February	0.8	-	-	1.4	-	-	60.1	-	-
March	0.2	-	-	0.5	0.1	-	41.2	17.0	-
April	0.2	-	-	0.3	-	-	55.2	-	-
May	0.2	0.2	-	0.3	0.2	-	71.8	91.3	-
June	-	-	0.2	-	-	0.2	-	-	90.9
July	-	0.2	-	-	0.3	-	-	63.5	-
August	-	-	-	-	-	-	-	-	-
September	0.2	0.1	0.2	0.3	0.2	0.2	63.2	64.4	97.3
October	0.2	0.1	0.1	0.2	0.1	0.2	87.6	100.0	88.1
November	-	0.2	0.2	-	0.2	0.2	-	93.6	97.3
December	-	-	-	-	-	-	-	-	-
<b>Total</b>	<b>2.0</b>	<b>0.9</b>	<b>0.8</b>	<b>3.3</b>	<b>1.2</b>	<b>0.8</b>	<b>59.9</b>	<b>74.4</b>	<b>93.7</b>

## 4: Arrivals by Air (Charter Flights)

**Table 4.03 Arrivals by Air (Charter Flights), 2006 - 2007, 2009**

	Seats used (000's)			Seats offered (000's)			Load factor (%)		
	2006	2007	2009	2006	2007	2009	2006	2007	2009
January	-	-	-	-	-	-	-	-	-
February	-	-	-	-	0.1	-	-	32.8	-
March	-	-	-	-	-	-	-	-	-
April	-	-	-	-	0.1	-	-	50.0	-
May	-	-	-	-	0.4	-	-	-	-
June	0.2	-	-	0.2	0.2	-	69.4	-	-
July	0.2	0.4	-	0.3	0.5	-	84.4	67.9	-
August	0.2	-	0.2	0.2	-	0.2	97.3	-	83.1
September	-	-	-	-	0.2	-	-	-	-
October	-	-	-	-	-	-	-	-	-
November	-	-	-	-	0.2	-	-	20.6	-
December	-	-	-	-	0.1	-	-	-	-
<b>Total</b>	<b>0.6</b>	<b>0.5</b>	<b>0.2</b>	<b>0.7</b>	<b>1.8</b>	<b>0.2</b>	<b>83.8</b>	<b>25.0</b>	<b>83.1</b>

**Table 4.04 Arrivals by Air (Charter Flights), 2010, 2014 - 2015**

	Seats used (000's)			Seats offered (000's)			Load factor (%)		
	2010	2014	2015	2010	2014	2015	2010	2014	2015
January	-	-	-	-	-	-	-	-	-
February	-	-	-	-	-	-	-	-	-
March	-	-	-	-	-	-	-	-	-
April	-	0.1	-	-	0.2	-	-	46.2	-
May	0.2	0.1	-	0.4	0.5	-	56.7	24.5	-
June	-	0.1	0.2	-	0.1	0.3	-	40.7	84.0
July	-	-	-	-	0.1	-	-	16.4	-
August	-	-	-	-	-	-	-	-	-
September	0.3	-	-	0.5	-	-	67.3	-	-
October	-	-	-	-	-	-	-	-	-
November	-	-	-	-	-	-	-	-	-
December	-	-	-	-	-	-	-	-	-
<b>Total</b>	<b>0.5</b>	<b>0.3</b>	<b>0.2</b>	<b>0.8</b>	<b>1.0</b>	<b>0.3</b>	<b>62.6</b>	<b>30.3</b>	<b>84.0</b>

## 5: Departures by Air (Charter Flights)

**Table 5.01 Departures by Air (Charter Flights), 2000 - 2002**

	Seats used (000's)			Seats offered (000's)			Load factor (%)		
	2000	2001	2002	2000	2001	2002	2000	2001	2002
January	0.1	-	-	0.1	-	-	82.6	-	-
February	-	-	-	-	-	-	-	-	-
March	-	-	0.1	-	-	0.1	-	-	100.0
April	0.2	0.1	0.2	0.3	0.3	0.2	65.8	42.4	100.0
May	-	-	0.1	-	-	0.1	-	-	100.0
June	-	-	0.1	-	-	0.1	-	-	100.0
July	-	-	0.1	-	-	0.1	-	-	100.0
August	-	-	-	0.1	-	-	94.0	-	-
September	0.1	-	-	0.1	-	-	56.9	-	-
October	-	-	0.1	-	-	0.1	-	-	100.0
November	0.1	-	-	0.2	-	-	34.4	-	-
December	-	-	0.1	-	-	0.1	67.5	-	53.8
<b>Total</b>	<b>0.5</b>	<b>0.1</b>	<b>0.9</b>	<b>0.8</b>	<b>0.3</b>	<b>0.9</b>	<b>62.4</b>	<b>42.4</b>	<b>94.6</b>

**Table 5.02 Departures by Air (Charter Flights), 2003 - 2005**

	Seats used (000's)			Seats offered (000's)			Load factor (%)		
	2003	2004	2005	2003	2004	2005	2003	2004	2005
January	0.1	-	-	0.3	-	-	43.8	-	-
February	0.9	-	-	1.4	-	-	64.5	-	-
March	0.2	-	-	0.5	0.1	-	42.0	25.0	-
April	0.2	-	-	0.3	-	-	62.8	-	-
May	0.2	0.2	-	0.3	0.2	-	63.1	90.4	-
June	-	-	0.2	-	-	0.2	-	-	80.8
July	-	0.2	-	-	0.3	-	-	59.0	-
August	-	-	-	-	-	-	-	-	-
September	0.1	0.2	0.2	0.3	0.2	0.2	41.9	86.8	68.9
October	0.2	0.1	0.2	0.2	0.1	0.2	85.4	100.0	98.8
November	-	0.2	0.2	-	0.2	0.2	-	94.1	89.0
December	-	-	-	-	-	-	-	-	-
<b>Total</b>	<b>1.9</b>	<b>0.9</b>	<b>0.7</b>	<b>3.3</b>	<b>1.2</b>	<b>0.8</b>	<b>58.2</b>	<b>78.1</b>	<b>83.5</b>

## 5: Departures by Air (Charter Flights)

**Table 5.03 Departures by Air (Charter Flights), 2006 - 2007, 2009**

	Seats used (000's)			Seats offered (000's)			Load factor (%)		
	2006	2007	2009	2006	2007	2009	2006	2007	2009
January	-	-	-	-	-	-	-	-	-
February	-	-	-	-	0.1	-	-	32.8	-
March	-	-	-	-	-	-	-	-	-
April	-	-	-	-	0.1	-	-	50.0	-
May	-	0.2	-	-	0.4	-	-	59.6	-
June	0.2	0.2	-	0.2	0.2	-	95.0	100.0	-
July	0.2	0.2	-	0.3	0.5	-	85.8	42.0	-
August	0.1	-	0.2	0.2	-	0.2	63.5	78.6	88.6
September	-	0.2	-	-	0.2	-	-	73.5	-
October	-	-	-	-	-	-	-	-	-
November	-	-	-	-	0.2	-	-	18.6	-
December	-	0.1	-	-	0.1	-	-	73.6	-
<b>Total</b>	<b>0.6</b>	<b>1.0</b>	<b>0.2</b>	<b>0.7</b>	<b>1.8</b>	<b>0.2</b>	<b>81.8</b>	<b>56.0</b>	<b>88.6</b>

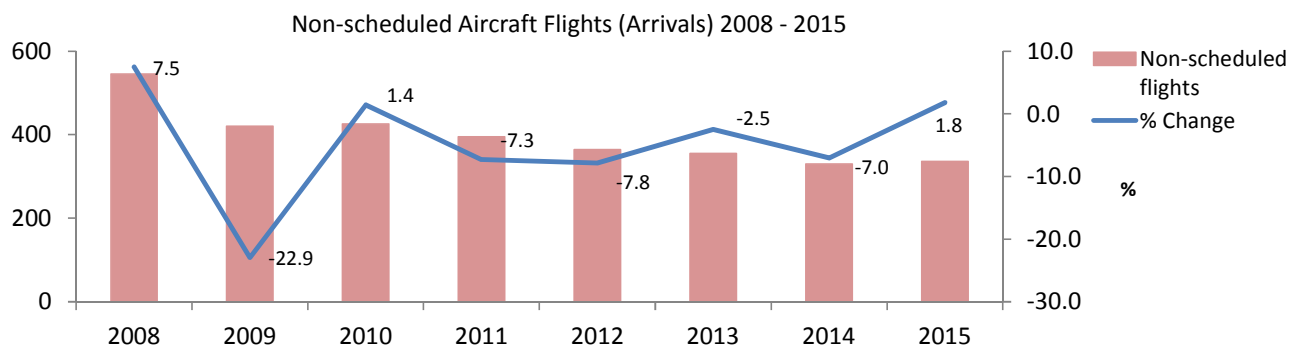
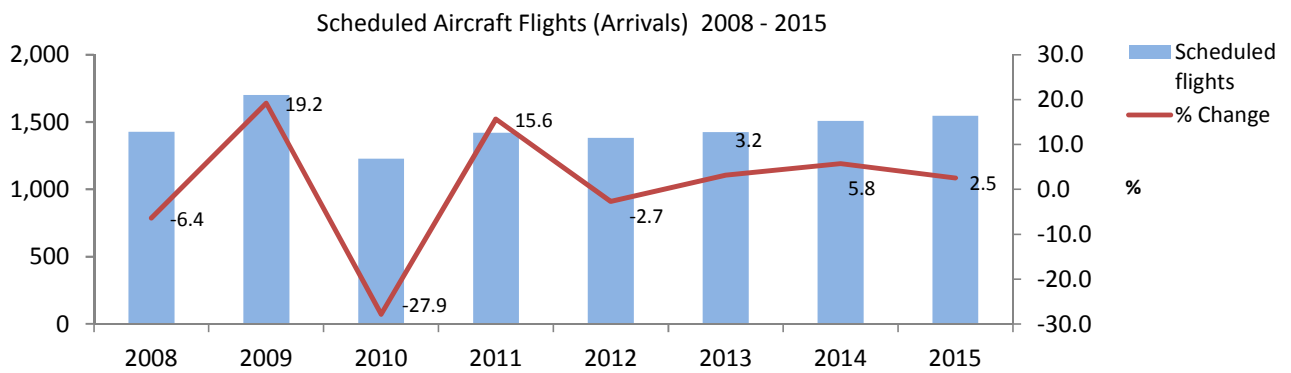
**Table 5.04 Departures by Air (Charter Flights), 2010, 2014 - 2015**

	Seats used (000's)			Seats offered (000's)			Load factor (%)		
	2010	2014	2015	2010	2014	2015	2010	2014	2015
January	-	-	-	-	-	-	-	-	-
February	-	-	-	-	-	-	-	-	-
March	-	-	-	-	-	-	-	-	-
April	-	0.1	-	-	0.2	-	-	43.8	-
May	0.2	0.1	-	0.4	0.5	-	65.3	19.0	-
June	-	0.1	0.0	-	0.1	0.0	-	46.4	80.0
July	-	-	0.2	-	0.1	0.2	-	12.9	84.8
August	-	-	-	-	-	-	-	-	-
September	0.3	-	-	0.5	-	-	73.4	-	-
October	-	-	-	-	-	-	-	-	-
November	-	-	-	-	-	-	-	-	-
December	-	-	-	-	-	-	-	-	-
<b>Total</b>	<b>0.6</b>	<b>0.3</b>	<b>0.2</b>	<b>0.8</b>	<b>1.0</b>	<b>0.3</b>	<b>69.8</b>	<b>27.3</b>	<b>84.0</b>

6: Aircraft Arrivals

**Table 6.01 Aircraft Arrivals, 2008 - 2015**

Year	Scheduled flights	Non-scheduled flights	Total flights
2008	1,427	545	<b>1,972</b>
2009	1,701	420	<b>2,121</b>
2010	1,227	426	<b>1,653</b>
2011	1,419	395	<b>1,814</b>
2012	1,381	364	<b>1,745</b>
2013	1,425	355	<b>1,780</b>
2014	1,507	330	<b>1,837</b>
2015	1,545	336	<b>1,881</b>



7: Commercial Freight

**Table 7.01 Commercial Freight, Set Down/Picked Up by Air, Gibraltar, 1991 - 2015**

Year	Set Down (000's kgs)	% Change	Picked Up (000's kgs)	% Change
1991	596	-	54	-
1992	476	-20.1	64	18.5
1993	597	25.4	74	15.6
1994	518	-13.2	49	-33.8
1995	504	-2.7	52	6.1
1996	406	-19.4	58	11.5
1997	330	-18.7	57	-1.7
1998	406	23.0	69	21.1
1999	433	6.7	77	11.6
2000	419	-3.2	74	-3.9
2001	306	-27.0	71	-4.1
2002	289	-5.6	60	-15.5
2003	325	12.5	66	10.0
2004	320	-1.5	61	-7.6
2005	324	1.3	57	-6.6
2006	296	-8.6	52	-8.8
2007	333	12.5	63	21.2
2008	216	-35.1	31	-50.8
2009	134	-38.0	11	-64.5
2010	135	0.7	20	81.8
2011	111	-17.8	16	-20.0
2012	140	26.1	16	-
2013	156	11.4	14	-12.5
2014	131	-16.0	15	7.1
2015	125	-4.6	9	-40.0

